

Part #7114 Chrysler 5.7/6.1L Hemi Billet Timing Set

Thank you for choosing COMP Cams® products; we are proud to be your manufacturer of choice. Please read this instruction sheet carefully before beginning installation, and also take a moment to review the included limited warranty information.

1. Install the tensioner plate. Torque bolts to 250 in/lbs. Remove pin after the chain is installed.
2. Install the 9 position crank sprocket. Use the “0” neutral position or 2, 4, 6, or 8 degree Advance or Retard keyways. “A” indicates Advance and “R” indicates Retard. Timing mark MUST be at 6 o’clock and keyway at 2 o’clock (See Fig. 1).



Fig. 1

3. Install the oil pump drive sprocket on the crankshaft outside of the crank sprocket. (See Fig. 2 and 3).

Fig. 2

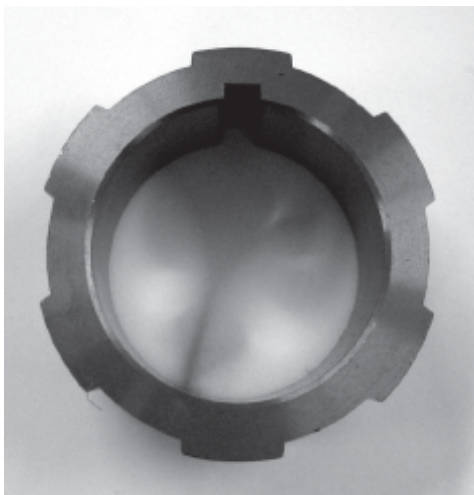


Fig. 3



4. Install the cam sprocket with camshaft pin and slot at 12 o'clock. Torque cam bolt to 90 ft/lbs.
5. Install chain.
6. Install the oil pump on the oil pump drive sprocket. Place the oil pump spacers between the oil pump and engine block mounting holes. The peanut shaped spacer has the oil flow hole.
7. Remove oil pan. Elongate the mounting hole on the bracket of the oil pump. Pick-up tube by 1/8" to 1/4" so it can slide forward and connect to the oil pump. This compensates for the oil pump spacers.
8. Install timing cover. There should be clearance. If not, grind off any high spots.

Limited Warranty

Competition Cams, Inc. warrants that all of its products are free from defects in material and workmanship, and against excessive wear for a period of (1) one year from the date of purchase. This **limited warranty** shall cover the original purchaser.

Competition Cams, Inc.'s obligation under this warranty is limited to the repair or replacement of its product. To make a warranty claim, the part must be returned within (1) one year of purchase to the address listed below, freight prepaid. Items covered under warranty will be returned to you freight collect.

It is the responsibility of the installer to ensure that all of the components are correct before installation. We assume no liability for any errors made in tolerances, component selection, or installation.

There is absolutely no warranty on the following:

- A) **Any parts used in racing applications;**
- B) **Any product that has been physically altered, improperly installed or maintained;**
- C) **Any product used in improper applications, abused, or not used in conjunction with the proper parts.**

There are no implied warranties of merchantability or fitness for a particular purpose. There are no warranties, which extend beyond the description of the face hereof. Competition Cams, Inc. will not be responsible for incidental and consequential damages, property damage or personal injury damages to the extent permitted by law. Where required by law, implied warranties or merchantability and fitness are limited for a term of (1) one year from the date of original purchase.

This warranty gives you specific legal rights and you may also have other legal rights, which vary from state to state.



COMP Cams®
3406 Democrat Rd.
Memphis, TN 38118
Phone: (901) 795-2400 Fax: (901) 366-1807
www.compcams.com

Part #COMP4-135
Revised 7/23/10